

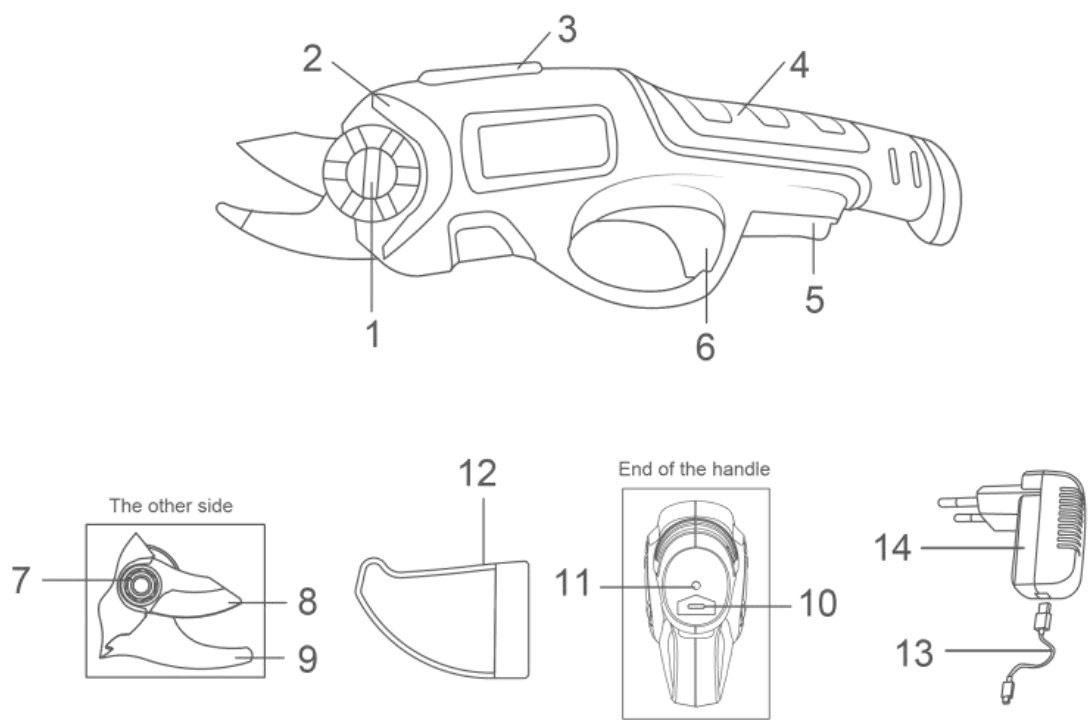
PreferredLiving
PreferredLiving.com

3.6v Power Pruner
User Manual and Operating Instructions
Item Number: 21342

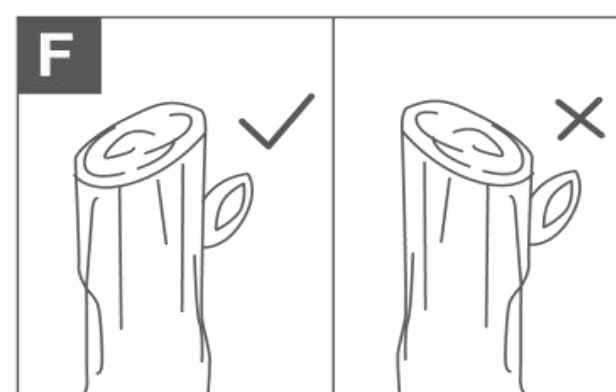
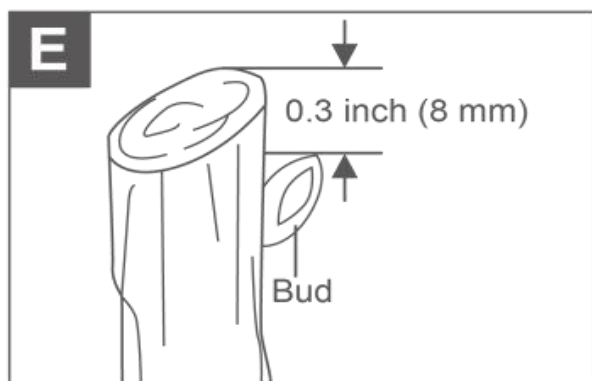
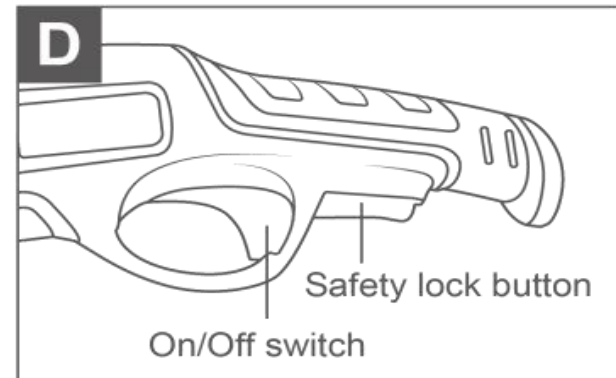
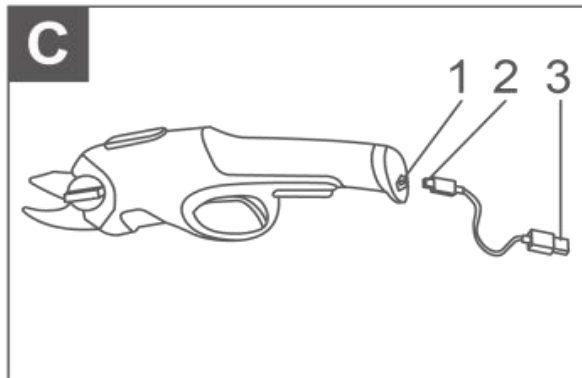
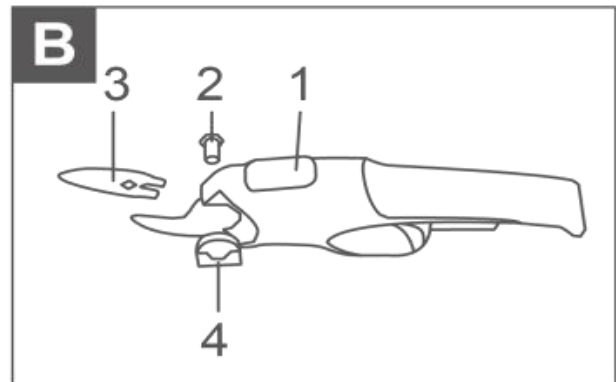
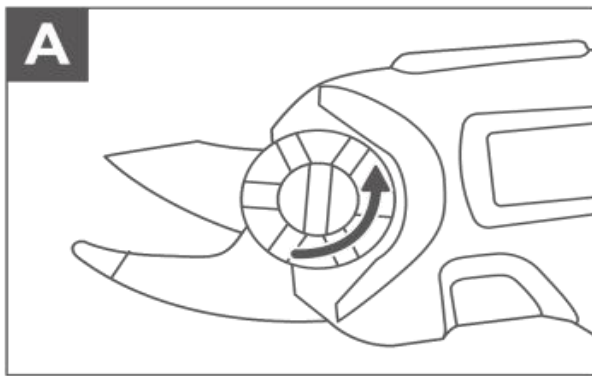


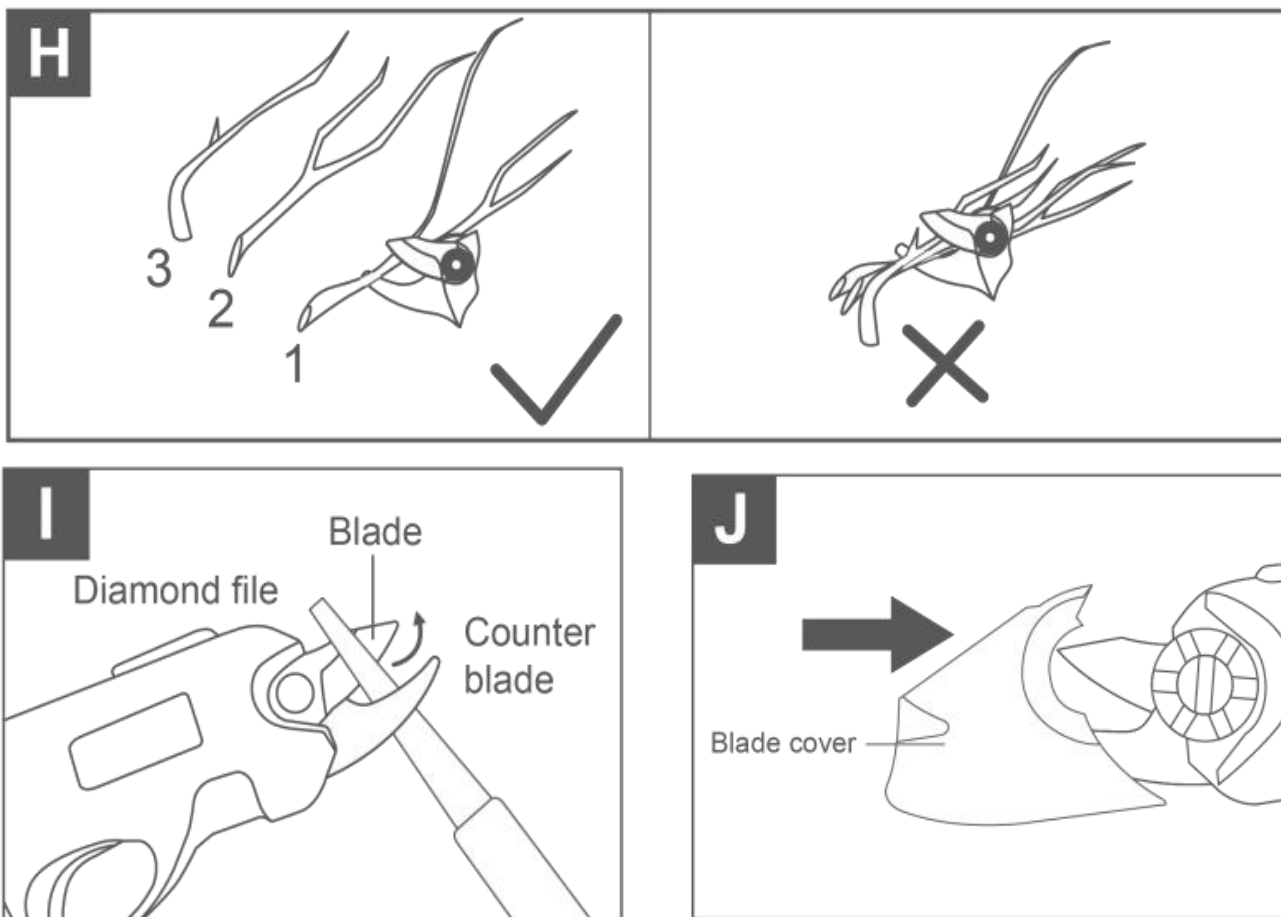
Preferred Living
PreferredLiving.com
2001 Sporty's Drive
Batavia, OH 45103
PreferredLiving@Sportys.com
1-800-776-7897

Description of parts



1	Blade lock knob	8	Removable blade
2	Machine housing	9	Fixed blade
3	Pawl button	10	Charging socket
4	Handle	11	Charging indicator
5	Safety lock button	12	Blade cover
6	On/Off switch	13	Type-c cable line
7	Blade lock bolt	14	Charger





Safety warnings

All Operators Must Read These Instructions Before Use. These instructions are for your safety. Please read through them thoroughly before use and retain them for future reference.

General power tool safety warnings



WARNING! Read all safety warnings and all instructions. Failure to follow the warnings and instructions may result in electric shock, fire and/or serious injury. Save all warnings and instructions for future reference.
The term "power tool" in the warnings refers to your battery-operated (cordless) power tool.

Work area safety

- a) **Keep work area clean and well lit.** Cluttered or dark areas invite accidents.
- b) **Do not operate power tools in explosive atmospheres, such as in the presence of flammable liquids, gases or dust.** Power tools create sparks which may ignite the dust or fumes.
- c) **Keep children and bystanders away while operating a power tool.** Distractions can cause you to lose control.

Electrical safety

- a) **Power tool plugs must match the outlet. Never modify the plug in any way. Do not use any adapter plugs with grounded power tools.** Unmodified plugs and matching outlets will reduce risk of electric shock.
- b) **Avoid body contact with grounded surfaces such as pipes, radiators, ranges and refrigerators.** There is an increased risk of electric shock if your body is grounded.
- c) **Do not expose power tools to rain or wet conditions.** Water entering a power tool will increase the risk of electric shock.

d) Do not abuse the cord. Never use the cord for carrying, pulling or unplugging the power tool. Keep cord away from heat, oil, sharp edges or moving parts. Damaged or entangled cords increase the risk of electric shock.

e) If operating a power tool in a damp location is unavoidable, use a residual current device (RCD) protected supply. Use of an RCD reduces the risk of electric shock.

f) Use Right Appliance - Do not use appliance for any job except that for which it is intended.

g) If the charging cable is damaged, please call Sporty's Preferred Living customer service at 1-800-776-7897

Personal safety

a) Stay alert, watch what you are doing and use common sense when operating a power tool. Do not use a power tool while you are tired or under the influence of drugs, alcohol or medication. A moment of inattention while operating power tools may result in serious personal injury.

b) Use personal protective equipment. Always wear eye protection. Protective equipment such as dust mask, non-skid safety shoes, hard hat, or hearing protection used for appropriate conditions will reduce personal injuries.

c) Prevent unintentional starting. Ensure the switch is in the off-position before connecting to power source and/or battery pack, picking up or carrying the tool. Carrying power tools with your finger on the switch or energizing power tools that have the switch on invites accidents.

d) Remove any adjusting key or wrench before turning the power tool on. A wrench or a key left attached to a rotating part of the power tool may result in personal injury.

e) Do not overreach. Keep proper footing and balance at all times. This enables better control of the power tool in unexpected situations.

f) Dress properly. Do not wear loose clothing or jewelry. Keep your hair, clothing and gloves away from moving parts. Loose clothes, jewelry or long hair can be caught in moving parts.

Power tool use and care

a) Do not force the power tool. Use the correct power tool for your application. The correct power tool will do the job better and safer at the rate for which it was designed.

b) Do not use the power tool if the switch does not turn it on and off. Any power tool that cannot be controlled with the switch is dangerous and must be repaired.

c) Disconnect the plug from the power source and/or the battery pack from the power tool before making any adjustments, changing accessories, or storing power tools. Such preventive safety measures reduce the risk of starting the power tool accidentally.

d) Store idle Appliances Indoors - When not in use, appliances should be stored indoors in dry, and high or locked-up place - out of reach of children.

e) Check for misalignment or binding of moving parts, breakage of parts and any other condition that may affect the power tools operation. If damaged, have the power tool repaired before use. Many accidents are caused by poorly maintained power tools.

f) Keep cutting tools sharp and clean. Properly maintained cutting tools with sharp cutting edges are less likely to bind and are easier to control.

g) Use the power tool and accessories in accordance with these instructions and in the manner intended for the particular type of power tool, taking into account the working conditions and the work to be performed. Use of the power tool for operations different from those intended could result in a hazardous situation.

h) Keep all parts of the body away from the cutter blade. Do not remove cut material or hold materials to be cut when blades are moving. Make sure the switch is off when clearing jammed material. A moment of inattention while operating the hedge trimmer may result in serious personal injury.

i) Carry the hedge trimmer by the handle with the cutter blade stopped. When transporting or storing the hedge trimmer always fit the cutting device cover. Proper handling of the hedge trimmer will reduce possible personal injury from the cutter blades.

j) Hold the power tool by insulated gripping surfaces only, because the cutter blade may contact hidden wiring or its own cord. Cutter blades contacting a "live" wire may make exposed metal parts of the power tool "live" and could give the operator an electric shock.

Service

a) Have your power tool serviced by a qualified repair person using only identical replacement parts. This will ensure that the safety of the power tool is maintained.

b) If the charging cable is damaged, it must be immediately replaced to avoid hazard. Contact Sporty's Preferred Living customer service at 1-800-776-7897 or via email at PreferredLiving@sportys.com.

Battery tool use and care

- a) Replace only with the charger specified by the manufacturer.** A charger that is suitable for one type of battery pack may create a risk of fire when used with another battery pack.
- b) This charger is only intended to charge this rechargeable battery.** Any other use poses a risk of fire, electric shock or electrocution.
- c) Do not place any object on top of the charger or place the charger on a soft surface that may result in excessive internal heat.** Keep the charger away from any heat sources.
- d) Under abusive conditions, liquid may be ejected from the battery; avoid contact. If contact accidentally occurs, flush with water. If liquid contacts eyes, additionally seek medical help.** Liquid ejected from the battery may cause irritation or burns.
- e) Do not charge appliance in rain, or in wet locations.**
- f) Do not store or use the tool and battery pack in locations where the temperature may reach or exceed 104°F (40°C).** Dangerous storing locations include outdoor sheds or metal buildings in the summer.
- g) Do not use battery-operated appliance in rain.**
- h) Use only the authorized battery.**
- i) Do not dispose of the battery in a fire. The cell may explode. Check with local codes for possible special disposal instructions.**
- j) Do not open or mutilate the battery. Released electrolyte is corrosive and may cause damage to the eyes or skin. It may be toxic if swallowed.**
- k) Exercise care in handling batteries in order not to short the battery with conducting materials such as rings, bracelets, and keys. The battery or conductor may overheat and cause burns.**

ADDITIONAL SAFETY WARNING

⚠ WARNING!

Please read all instructions carefully, not complying with instruction may lead to electric shocks, fire or other serious damage.

This equipment is not designed to be used by people (including children) with limited physical, sensory or mental capacities or those with no experience and/or knowledge unless they are supervised by a person who is responsible for their safety or they have received instructions from such a person in to how to use the equipment safely. Children must always be supervised in order to ensure that they do not play with the equipment.

⚠ DANGER!

When using the equipment, a few safety precautions must be observed to avoid injuries and damage. Please read the complete operating instructions and safety regulations with due care. Keep this manual in a safe place, so that the information is available at all times. If you give the equipment to any other person, hand over these operating instructions and safety regulations as well. We cannot accept any liability for damage or accidents which arise due to a failure to follow these instructions and the safety instructions.

RESIDUAL RISKS

Even if you use this electric power tool in accordance with instructions, certain residual risks cannot be ruled out. The following hazards may arise in connection with the equipment's construction and layout:

1. Lung damage if no suitable protective dust mask is used.
2. Damage to hearing if no suitable ear protection is used.
3. Health damage caused by hand-arm vibrations if the equipment is used over a prolonged period or is not properly guided and maintained.

⚠ DANGER!

The electric power tool generates an electromagnetic field during operation. Under certain circumstances this field may actively or passively impede medical implants. To reduce the risk of serious or fatal injuries, we recommend persons with medical implants to consult their doctor and the manufacturer of the medical implant prior to using the equipment.

Symbols

Some of the following symbols may be used on this product. Please study them and learn their meaning. Proper interpretation of these symbols will allow you to operate the product better and safer.



- 1: Warning!
- 2: WARNING–To reduce the risk of injury, user must read instruction manual!
- 3: Wear eye and ear and head protection!
- 4: Wear protective gloves!
- 5: Wear safety footwear!
- 6: Do not expose to rain!
- 7: Keep bystanders away!

Intended Use

This equipment is designed for cutting branches and plants with a diameter of max. 10mm (softwood). The diameter is smaller for hardwood. This equipment is not suitable for cutting metal. The equipment is to be used only for its prescribed

purpose. Any other use is deemed to be a case of misuse. The user/operator and not the manufacturer will be liable for any damage or injuries of any kind caused as a result of this.

Technical specifications

Cutting capacity:8 mm(softwood)
Battery pack:Li-Ion / 3.6 V d. c. / 1.5 Ah
Charging time:1,5 h
Protection class:Battery Powered
K uncertainty3 dB
LpA sound pressure level: 69.83 dB
LWA sound power level:77.83 dB
K uncertainty3 dB
Vibration ahV: 0, 498 m/s²
K uncertainty 1,5 m/s²
Weight: 0.6 kg

Battery charger

Mains voltage.....100-240 VAC ~ 50-60 Hz

Output

Rated voltage 5V
Rated current: 1A

Before you start

Assembly

This cordless pruner comes completely assembled with the blade preinstalled.

⚠ CAUTION!

Wear protective gloves before handling the blade.

⚠ WARNING!

Make sure the unit is powered off before handling the blade.

Fitting and changing the blade

⚠ WARNING!

Use only recommended replacement blade. NOTE: Cutting will become difficult when the blade edge has become dull, at which time you should sharpen or change the blade.

⚠ WARNING!

Make sure that the pruner is off and always wear protective gloves while changing the blade.

⚠ WARNING!

Risk of injury; keep hands away from the switches when changing the blade.

1. Press the Pawl button and then rotate the blade lock knob counter-clockwise to disengage completely (Fig. A).
2. Wearing gloves, pull out the pin, grasp the removable blade and pull it from the pruner to remove it (Fig. B).
3. Insert the new blade into position, insert the pin again; (noting the direction of the pin and the corresponding step)
4. Press the ratchet button and lock the blade lock knobby turning it clockwise.

Before using

Battery charging

For charging, use the USB cable (Part13) and charger (Part 14). (Fig.C).

Pay attention to the mains voltage. The voltage of the power source must match the voltage specified on the rating plate of the power adaptor.

⚠ NOTE:

Lithium-ion rechargeable batteries are supplied partially charged according to international transport regulations. To ensure full rechargeable battery capacity, fully charge the rechargeable battery before using your tool for the first time.

⚠ WARNING!

Continued and excessive overuse of the ON/OFF trigger switch can permanently damage the lithium-ion battery.

Battery charging indicator (Fig. C).

The battery charging indicator indicates the charging progress. During the charging process, the indicator is red. When the battery charge indicator is extinguished, the battery is fully charged.

Battery Charging

The length of service between each charging varies depending on the type of work you are doing. The battery in this pruner has been designed to provide maximum trouble-free life. However, like all batteries, it will eventually wear out. To obtain the longest possible battery life, we suggest the following:

- Store and charge your cordless pruner in a cool area. Temperatures above or below normal room temperature will shorten battery life.
- Never store the cordless pruner with the battery in a discharged condition. Recharge the unit immediately after it is discharged.
- All batteries gradually lose their charge. The higher the temperature is, the faster they lose their charge. If you store your cordless pruner for long periods of time without using it, recharge the battery every 6 months. This will extend battery life.

Operation

⚠ IMPORTANT!

The product is intended for light-duty pruning of shrubs and hedges for residential properties.

⚠ WARNING!

The blades continue to move for a few seconds after the tool is switched OFF. Turn OFF the tool and wait until the blades come to a complete stop before adjusting or cleaning.

⚠ CAUTION!

Wear protective gloves while working with the pruner. Never touch the blade or blade rail while the tool is in operation and be aware of the sharp edges even when the pruner is not in use.

Starting + Stopping

To power ON, push and hold the safety lock button with your fingers, while pressing the On/Off trigger switch with your index finger.

For first time use, press the On/Off switch for a second to open the blade.

Then for cutting, once the On/Off switch is pressed, the removable blade will move down and the two blades will close to cut (Fig. D).

⚠ NOTE:

The safety lock button reduces the risk of accidental starting.

Release the On/Off switch, the two blades will open. After usage, press the On/Off switch for around 5 seconds to close the blade for storage withholding the safety lock button.

⚠ CAUTION!

Always ensure proper footing and balance in a clean and clear work environment before switching on the cordless pruner.

⚠ NOTE:

The pruner will stop working when the voltage is lower than 3 Volts. Please recharge as soon as possible if the pruner stops working.

Trimming tips

The cordless pruner can be used to remove fresh blooms from the garden; also great for pruning overgrowth, dead and overlapping stems and twigs, as well as thin and weak growth. Follow the tips below for operation.

1. Never cut too close to the bud, so the wound can heal properly.
2. Always make the cut above 0.3 inch (8 mm) from the bud (Fig. E).
3. The cut should slope away from the bud, so the rain can run off (Fig. F).
4. When removing the entire stem, cut back to the point where it branched (Fig. G).
5. Cut branches one by one, as shown (Fig. H).

Maintenance

⚠ WARNING! Always switch the product off and let the product cool down before performing inspection, maintenance, and cleaning work.

1. If the cordless pruner requires cleaning, do not use solvents to clean it. Only use a moistened soft cloth. Never let any liquid get inside the tool; and never immerse any part of the tool into any liquid.
2. Apply oil around the center bolt and open and close the tool about 10 times to work it in. Use the steel wool to rub the oil over the cutting surfaces. Spray the tool with alcohol and wipe with a paper towel.
3. Inspect the product before each use for worn and damaged parts. Do not operate it if you find broken and worn parts.

Blade Maintenance

To ensure years of efficient and trouble-free operation, blade cleaning should be performed if sap and debris have built-up, or if you live in an area where the soil is sandy.

Cleaning unusually heavy deposits may require removal of the blade.

1. Keep the cutting blades clean and free of debris. Remove trimmings.
2. Keep the blades sharp. Have a worn or damaged cutting device replaced with a new one of the same type by a qualified specialist.
3. To replace the blade, refer "Fitting and Changing the Blade" for instructions.

Blade Sharpening

⚠ WARNING!

Always take extra care, especially when your hand may be facing the cutting edge. Bypass pruners will generally only have one blade, the lower part being the counter blade which should never require sharpening. The cut of a bypass tool is achieved by the blade precisely passing by the counter blade. It therefore follows that you should never sharpen the flat side of the blade. If steel is removed from here, the two parts will no longer meet precisely and the tool will fail to cut. You must only sharpen on the outside or bevelled side of the blade.

1. To sharpen your cordless pruner, hold the open pruner flat in one hand and with the other hand place the sharpener at a 15-degree angle along the bevelled side of the blade (Fig. I).

⚠ NOTE:

Be careful to not sharpen at too steep an angle as this could damage the edge of the blade.

2. Move the sharpener in one direction only, with smooth strokes from base to end 4 to 5 times.

⚠ WARNING!

Do not over-sharpen. Be sure to test blades repeatedly throughout the sharpening process to prevent over-sharpening.

3. Turn the pruner over so the flat side of the blade is facing up and slide the sharpener flush along the bevelled edge to remove burrs created by sharpening the cutting blade.
4. A bench vise can also be used to hold the tool during sharpening, taking care not to over tighten the vise which can bend the tool.

⚠ WARNING!

Minimize coating loss. Stay to the edge of the blade when sharpening blades with low-friction or titanium coating to minimize the loss of coating.

Storage

When the tool will not be used for several months, proceed as follows:

- Fully charge the battery.
- Clean the product as describe above.
- Make sure that the blade lock knob is in the lock position, then assemble the blade cover over the blades (Fig. J).
- Store the tool in a secure and dry location. The storage temperature must always remain in the range of 41°F (5°C) to 104°F (40°C).
- Before using the tool after prolonged storage, fully recharge the battery.

Battery caution + disposal

Always dispose of your battery pack according to federal, state, and local regulations. Contact a recycling agency in your area for recycling locations.

⚠ CAUTION!

Even discharged battery packs contain some energy. Before disposing, use electrical tape to cover the terminals to prevent the battery pack from shorting, which could cause a fire or explosion.

⚠ WARNING!

To reduce the risk of injury or explosion, never burn or incinerate a battery pack even if it is damaged, dead, or completely discharged. When burned, toxic fumes and materials are emitted into the surrounding atmosphere.

1. Batteries vary according to device. Consult your manual for specific information.
2. Install only new batteries of the same type in your product (where applicable).
3. Failure to insert batteries in the correct polarity, as indicated in the battery compartment or manual, may shorten the life of the batteries or cause batteries to leak.
4. Do not mix old and new batteries.
5. Do not mix Alkaline, Standard (Carbon-Zinc), or Rechargeable (Nickel Cadmium, Nickel Metal Hydroxide, or Lithium-Ion) batteries.
6. Do not dispose of batteries in fire. The cell of the battery may explode.
7. Batteries should be recycled or disposed of as per state and local guidelines.

Troubleshooting

Problem	Possible cause	Corrective Action
Cutting time per battery charge too low	Battery close to end of service life.	Contact Service Agent.
Battery charge indicator lights up continuously No charging procedure possible	Battery defective	Contact Service Agent.

Disposal

The unit is supplied in packaging to prevent its being damaged in transit. This packaging is raw material and can therefore be reused or can be returned to the raw material system.

The unit and its accessories are made of various types of material, such as metal and plastic. Defective components must be disposed of as special waste. Ask your dealer or your local council.

Never place any electric power tools in your household refuse. Old electric power tools have to be separated from other waste and disposed of in an environment-friendly fashion, e.g. by taking to a recycling depot.

Recycling alternative to the return request:

As an alternative to returning the equipment to the manufacturer, the owner of the electrical equipment must make sure that the equipment is properly disposed of if he no longer wants to keep the equipment. The old equipment can be returned to a suitable collection point that will dispose of the equipment in accordance with the national recycling and waste disposal regulations.

Service + Support:

If power tool requires service or maintenance, please contact Sporty's Preferred Living customer service at 1-800-776-7897 or via email at PreferredLiving@sportys.com